



Merseytravel

Bus times

15

Birkdale - Southport - Marshside

Route 15 is operated by Cumfybus.



MT SFT 03/07 SP

Changes from 25 March 2007

Route 105 is withdrawn.

(Route 15 is unchanged.)

Travel Information



traveline
public transport info

0870 608 2 608
National Call Rate



No Smoking
on all buses
in Merseyside

OPEN 8AM TILL 8PM 7 DAYS A WEEK

www.merseytravel.gov.uk



Welcome to your new bus timetable

We (Merseytravel) have produced this new bus timetable as your bus service has recently changed. We **do not** run bus services - they are run by private bus companies. However, we pay towards essential bus services which the bus companies do not run. In timetables, these services are called **Merseytravel Bus Services** and are shown by the symbol



How to use this timetable

The timetable is split into routes and days of the week (see **1** below). Please make sure you are looking at the timetable for the right direction you want to travel in. The travel direction is shown across the top of the page.

On the left side of the page there is a list of the main bus stops for the service (see **2** below).

To the left of these stops is a list of numbered boxes (see **3** below) which will help you find the bus stop on the route map (the map is shown on a separate page within the booklet). There is also a description in writing of the route the bus takes.

The time the bus leaves each stop is shown in a column running down the right-hand side of the page (see **4** below). Each column of times is a separate bus journey. Read the column from top to bottom.

First, look for the bus stop nearest where you want to get the bus from. Then, look at the times shown on the same line to find the time nearest when you want to get the bus. Read down the list of times until you get to the time opposite a place near to where you want to get off the bus. The time is your arrival time.

We can't show times for every bus stop, or the timetable would be too big to print in a booklet. Please remember to look for any codes at the top of the page or alongside each column which may change your journey (see **5** below). You can find an explanation of these codes in the 'Codes' box at the bottom of the timetable.

You can find all the bus-stop codes we use in this booklet at the bottom of this page.

In some timetable booklets, we show some of the bus stops in italics (see **6** below). This means we have given a rough time for that stop because the bus company has not given us an exact time.

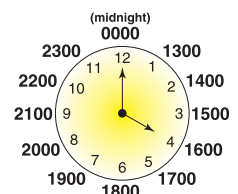
Here is an example of a timetable.

1 Mondays to Fridays			5
1	Liscard Wallasey Road 2	0751	0801
2	Church Road, Brighton Street	0757	0807
3	Poulton Road, Wheatland Lane	0800	0810
4	<i>Poulton Road, Gorsey Lane</i> 6	0804	0814
5	Weatherhead School	0807	0817



The 24-hour clock

In this timetable booklet, we show bus times in the 24-hour clock. For example, 9.42am is shown as '0942' and 3.28pm is shown as '1528'. This clock shows how afternoon and evening times appear in the 24-hour clock.



Codes used in this timetable

Shopping



Customer service and lost property

If you have any comments or suggestions about the bus services in this timetable, or have left something on a bus, you should contact the bus company which runs the service. The following bus companies run services in this timetable:

Cumfybus
42B Botanic Road, Southport, PR9 7NE

Phone: 01704 227321

If you have any comments or suggestions about Merseytravel bus services or have left something in a bus station we run, please contact us at:

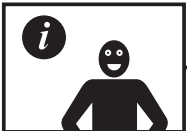
Merseytravel
24 Hatton Garden, Liverpool L3 2AN

Phone: 0151 227 5181



Public holidays

Bus services may change during public holidays. Please check with **Traveline** on **0870 608 2 608** for details of the bus services running on these days.



Where to get more information and help

Travel centres

We have seven travel centres throughout Merseyside. You can visit one to get information about all public transport services. To find out opening times, phone us on **0151 330 1066** or log on to **www.merseytravel.gov.uk**



Free weekly newspapers

Every week, you can find a 'Merseytravel news update' advert in your local free newspaper. This tells you about any changes to your bus services.



Teletext on itv1

If your television has Teletext, you can find a simple version of the 'Merseytravel news update' for the week to come on page 164 of Teletext on itv1.



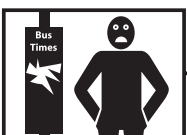
Our website

Our website (www.merseytravel.gov.uk) contains lots of information about public transport in Merseyside. You can visit our website at **www.merseytravel.gov.uk**



Smoking on buses

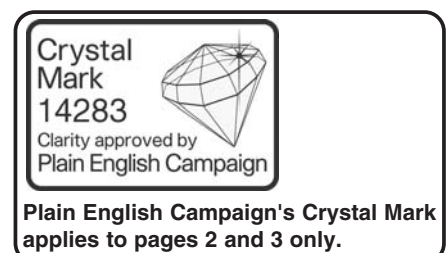
Help us and the bus companies of Merseyside make travelling on public transport an enjoyable experience for all customers. Please do not smoke on any buses.



Damage to bus stops and shelters

If you see any damage to our bus stops and shelters in Merseyside (for example, broken glass or vandalised timetable information displays), please help us to fix them quickly by phoning us on **0800 917 9997**. This call is free and the lines are open 24 hours a day.


We have done our best to make sure that all the information in this booklet is correct, but we and the bus companies whose services we show in this booklet, are not be liable for any mistakes.



15 Birkdale - Southport - Marshside

CUMFYBUS


Mondays to Saturdays

		NS	NS											
1	Birkdale Clive Road	0715	0745	0815	0845	0915	0945		15	45		1645	1715	1744
2	Grosvenor Road, Waterloo Road	0718	0748	0818	0848	0918	0948	then at	18	48		1648	1717	1747
3	Southport Lord Street, Duke Street	0725	0755	0825	0855	0925	0955	these	25	55		1655	1725	1755
4	Southport Monument 	0728	0758	0828	0858	0930	1000	minutes	30	00	until	1700	1728	1758
5	Hesketh Park Park Avenue					0936	1006	past	36	06		1705		
6	Marshside Marshside Road, Fleetwood Road					0943	1013		43	13		1713		

15 Marshside - Southport - Birkdale

CUMFYBUS

Mondays to Saturdays

		NS	NS											
6	Marshside Marshside Road, Fleetwood Road					0915	0945		15	45		1645		
5	Hesketh Park Park Avenue					0923	0953	then at	23	53		1653		
4	Southport Monument	0700	0730	0800	0830	0900	0930	1000	these	30	00		1700	1730
3	Southport Lord Street, Duke Street 	0703	0733	0803	0833	0903	0933	1003	minutes	33	03	until	1703	1733
2	Grosvenor Road, Waterloo Road	0708	0738	0808	0838	0908	0938	1008	past	38	08		1708	1738
1	Birkdale Clive Road	0713	0743	0813	0843	0913	0943	1013		43	13		1713	1743



Codes used on this page:

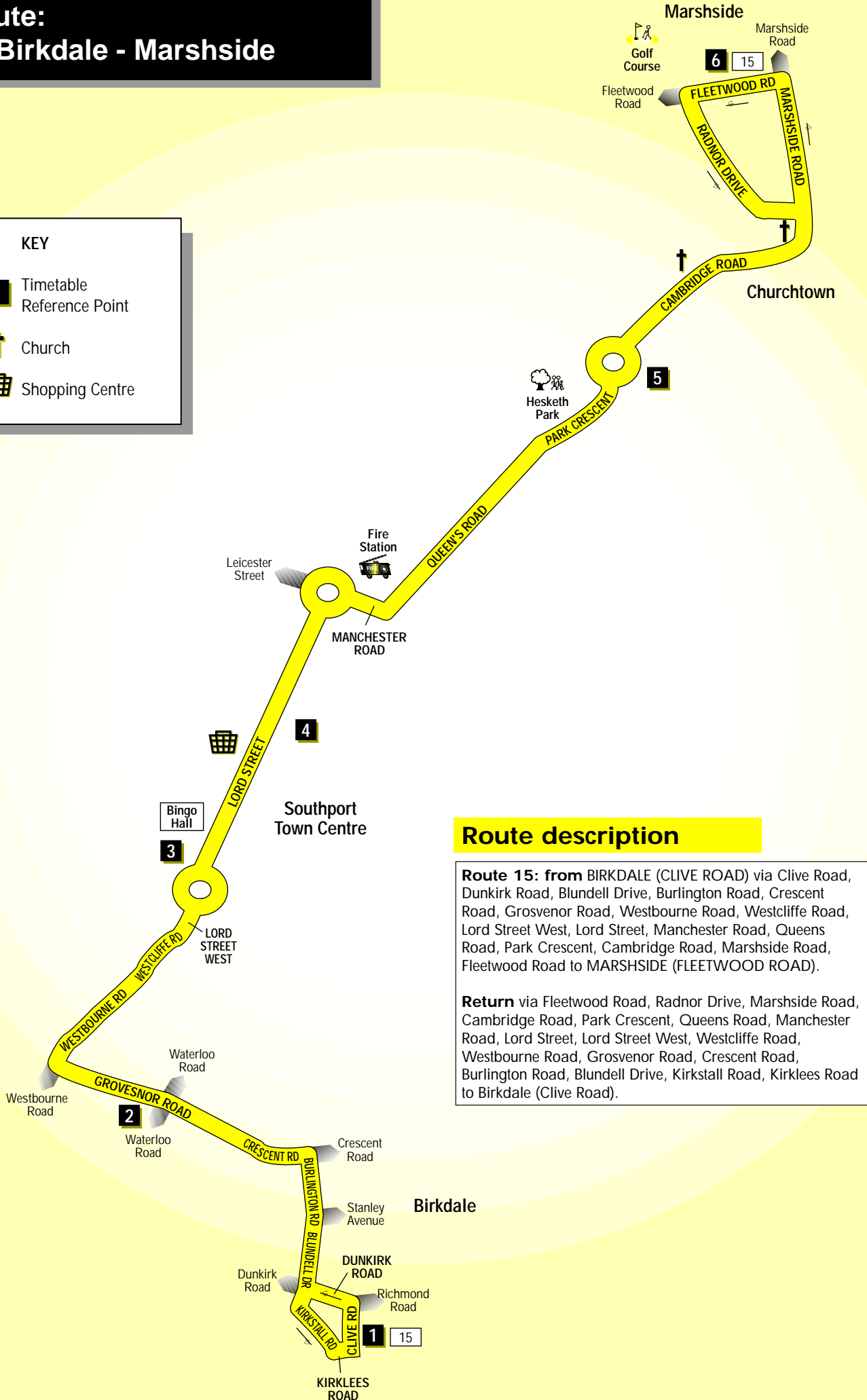
NS - Does not operate on Saturdays

Sundays - No Service

Route: 15 Birkdale - Marshside

KEY

- 1** Timetable Reference Point
-  Church
-  Shopping Centre



Route description

Route 15: from BIRKDALE (CLIVE ROAD) via Clive Road, Dunkirk Road, Blundell Drive, Burlington Road, Crescent Road, Grosvenor Road, Westbourne Road, Westcliffe Road, Lord Street West, Lord Street, Manchester Road, Queens Road, Park Crescent, Cambridge Road, Marshside Road, Fleetwood Road to MARSHSIDE (FLEETWOOD ROAD).

Return via Fleetwood Road, Radnor Drive, Marshside Road, Cambridge Road, Park Crescent, Queens Road, Manchester Road, Lord Street, Lord Street West, Westcliffe Road, Westbourne Road, Grosvenor Road, Crescent Road, Burlington Road, Blundell Drive, Kirkstall Road, Kirklees Road to Birkdale (Clive Road).