



Merseytravel

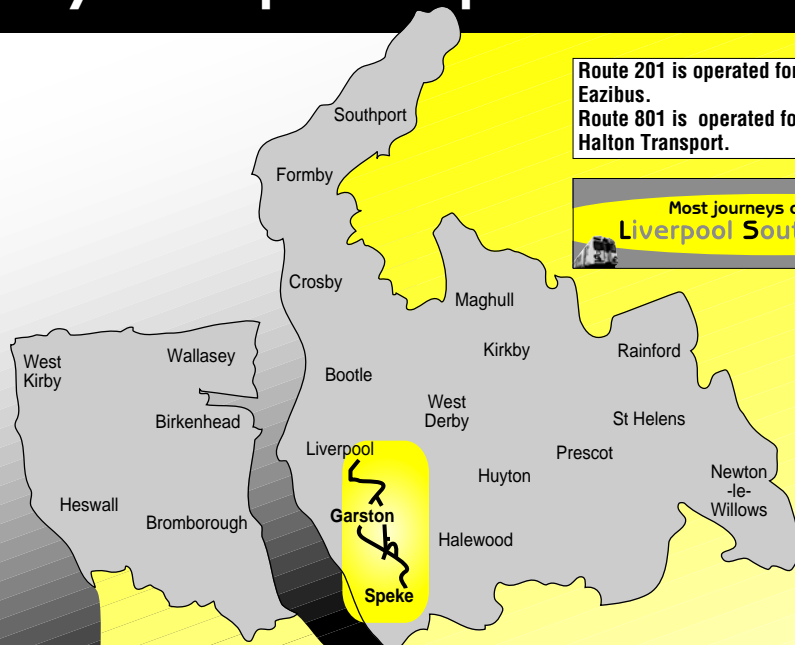
# Bus times

# 201 801

## Speke/Springwood Cemetery - Royal Liverpool Hospital

Route 201 is operated for Merseytravel by Eazibus.  
Route 801 is operated for Merseytravel by Halton Transport.

Most journeys operate via  
**Liverpool South Parkway**



MT SFT 09/07 L

### Changes from 14 October 2007

**Route 201:** service is now operated for Merseytravel by Eazibus.

(Route and times are unchanged.)

(Route 801 is unchanged.)

Travel  
Information



traveline  
public transport info

0871 200 22 33

Calls costs 10p per minute from  
land lines, mobiles may vary

OPEN 0800 TILL 2000 7 DAYS A WEEK

[www.merseytravel.gov.uk](http://www.merseytravel.gov.uk)



**No Smoking**  
on all buses  
in Merseyside



## Welcome to your new bus timetable

We (Merseytravel) have produced this new bus timetable as your bus service has recently changed. We **do not** run bus services - they are run by private bus companies. However, we pay towards essential bus services which the bus companies do not run. In timetables, these services are called **Merseytravel Bus Services** and are shown by the symbol



## How to use this timetable

The timetable is split into routes and days of the week (see **1** below). Please make sure you are looking at the timetable for the right direction you want to travel in. The travel direction is shown across the top of the page.

On the left side of the page there is a list of the main bus stops for the service (see **2** below).

To the left of these stops is a list of numbered boxes (see **3** below) which will help you find the bus stop on the route map (the map is shown on a separate page within the booklet). There is also a description in writing of the route the bus takes.

The time the bus leaves each stop is shown in a column running down the right-hand side of the page (see **4** below). Each column of times is a separate bus journey. Read the column from top to bottom.

First, look for the bus stop nearest where you want to get the bus from. Then, look at the times shown on the same line to find the time nearest when you want to get the bus. Read down the list of times until you get to the time opposite a place near to where you want to get off the bus. The time is your arrival time.

We can't show times for every bus stop, or the timetable would be too big to print in a booklet. Please remember to look for any codes at the top of the page or alongside each column which may change your journey (see **5** below). You can find an explanation of these codes in the 'Codes' box at the bottom of the timetable.

You can find all the bus-stop codes we use in this booklet at the bottom of this page.

In some timetable booklets, we show some of the bus stops in italics (see **6** below). This means we have given a rough time for that stop because the bus company has not given us an exact time.

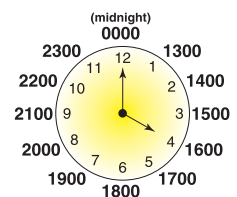
Here is an example of a timetable.

<b>1</b> Mondays to Fridays			<b>5</b>
<b>1</b> Liscard Wallasey Road	<b>2</b>	0751	<b>4</b> 0801
<b>2</b> Church Road, Brighton Street		0757	0807
<b>3</b> Poulton Road, Wheatland Lane		0800	0810
<b>4</b> <i>Poulton Road, Gorsey Lane</i>	<b>6</b>	0804	0814
<b>5</b> Weatherhead School		0807	0817



## The 24-hour clock

In this timetable booklet, we show bus times in the 24-hour clock. For example, 9.42am is shown as '0942' and 3.28pm is shown as '1528'. This clock shows how afternoon and evening times appear in the 24-hour clock.



## Codes used in this timetable

Liverpool South Parkway bus/rail interchange

Hospital



## Customer service and lost property

If you have any comments or suggestions about Merseytravel bus services or have left something in a bus station we run, please contact us at:

**Merseytravel**  
24 Hatton Garden, Liverpool L3 2AN

**Phone: 0151 227 5181**



## Public holidays

Bus services may change during public holidays. Please check with **Traveline** on **0871 200 22 33** for details of the bus services running on these days.



## Where to get more information and help

### Travel centres

We have seven travel centres throughout Merseyside. You can visit one to get information about all public transport services. To find out opening times, phone us on **0151 330 1066** or log on to **www.merseytravel.gov.uk**



### Free weekly newspapers

Every week, you can find a 'Merseytravel news update' advert in your local free newspaper. This tells you about any changes to your bus services.



### Teletext on itv1

If your television has Teletext, you can find a simple version of the 'Merseytravel news update' for the week to come on page 164 of Teletext on itv1.



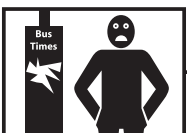
### Our website

Our website ([www.merseytravel.gov.uk](http://www.merseytravel.gov.uk)) contains lots of information about public transport in Merseyside. You can visit our website at **www.merseytravel.gov.uk**



## Smoking on buses

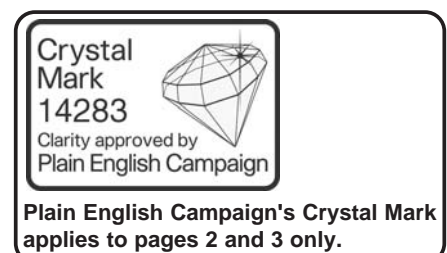
Help us and the bus companies of Merseyside make travelling on public transport an enjoyable experience for all customers. Please do not smoke on any buses.



## Damage to bus stops and shelters

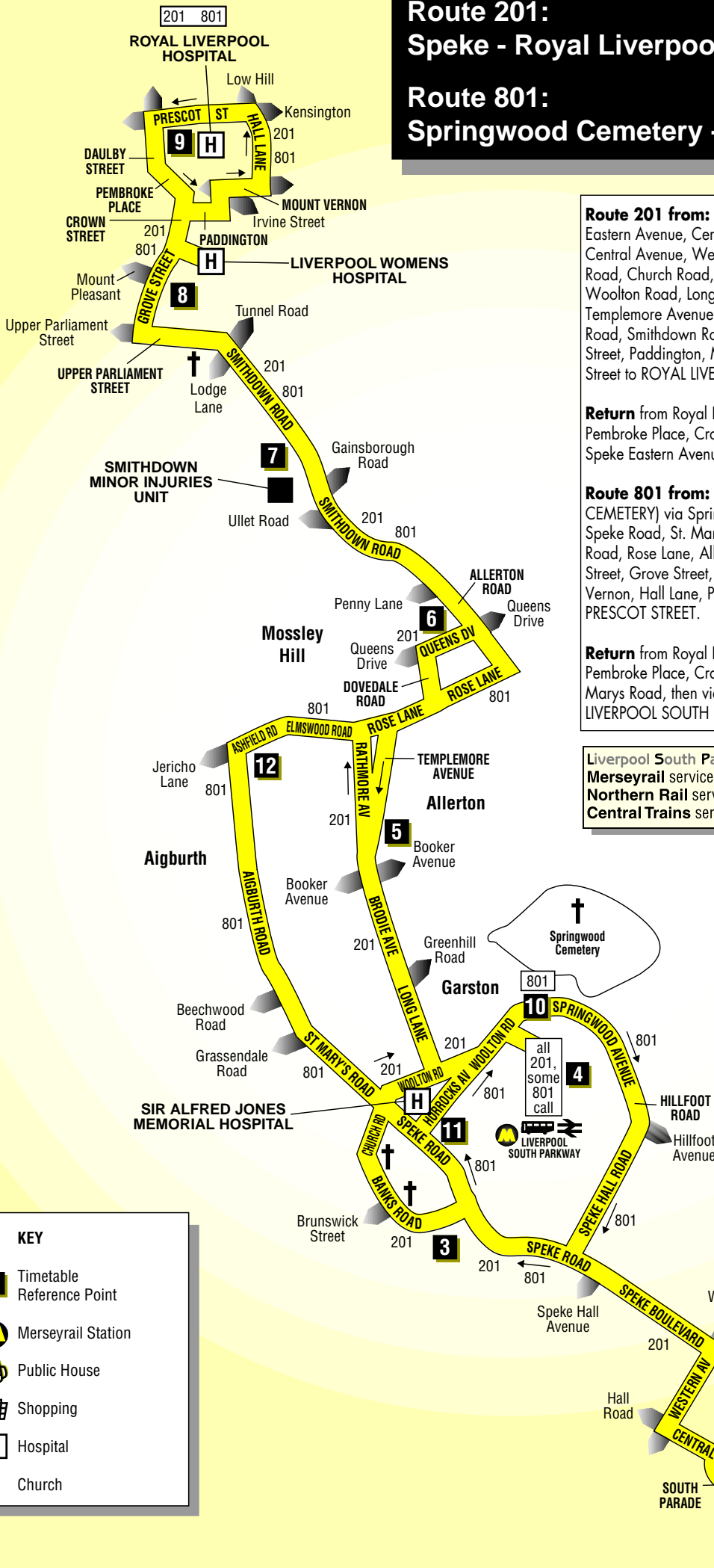
If you see any damage to our bus stops and shelters in Merseyside (for example, broken glass or vandalised timetable information displays), please help us to fix them quickly by phoning us on **0800 917 9997**. This call is free and the lines are open 24 hours a day.

We have done our best to make sure that all the information in this booklet is correct, but we and the bus companies whose services we show in this booklet, are not liable for any mistakes.



# Route 201: Speke - Royal Liverpool Hospital

# Route 801: Springwood Cemetery - Royal Liverpool Hospital



**Route 201 from:** SPEKE EASTERN AVENUE/MILLWOOD ROAD via Eastern Avenue, Central Way, South Parade (return via North Parade), Central Avenue, Western Avenue, Speke Boulevard, Speke Road, Banks Road, Church Road, Woolton Road, LIVERPOOL SOUTH PARKWAY, Woolton Road, Long Lane, Brodie Avenue, Rathbone Avenue (return via Templemore Avenue), Rose Lane, Dovedale Road, Queens Drive, Allerton Road, Smithdown Road, Upper Parliament Street, Grove Street, Crown Street, Paddington, Minshull Street, Mount Vernon, Hall Lane, Prescott Street to ROYAL LIVERPOOL HOSPITAL/PRESCOT STREET.

**Return** from Royal Liverpool Hospital via Prescott Street, Daulby Street, Pembroke Place, Crown Street then via the reverse of above route to Speke Eastern Avenue/Millwood Road.

**Route 801 from:** SPRINGWOOD AVENUE (SPRINGWOOD CEMETERY) via Springwood Avenue, Hillfoot Road, Speke Hall Road, Speke Road, St. Mary's Road, Aigburth Road, Ashfield Road, Elmswood Road, Rose Lane, Allerton Road, Smithdown Road, Upper Parliament Street, Grove Street, Crown Street, Paddington, Minshull Street, Mount Vernon, Hall Lane, Prescott Street to ROYAL LIVERPOOL HOSPITAL/PRESCOT STREET.

**Return** from Royal Liverpool Hospital via Prescott Street, Daulby Street, Pembroke Place, Crown Street then via the reverse of above route to St. Marys Road, then via Speke Road, Horrocks Avenue, Woolton Road, LIVERPOOL SOUTH PARKWAY, Woolton Road, Springwood Avenue to

**Liverpool South Parkway** Merseyrail services to Hunts Cross, Liverpool Central and Southport.  
**Northern Rail** services to Warrington and Manchester.  
**Central Trains** services to Crewe, Wolverhampton and Birmingham.

**KEY**

- Timetable Reference Point
- Merseyrail Station
- Public House
- Shopping
- Hospital
- Church

201

# Speke - Royal Liverpool Hospital

Merseytravel  
bus service

## Mondays to Saturdays

M M M

<b>1</b>	<b>Speke</b> Eastern Avenue	1320	1448	1755
<b>2</b>	Speke Boulevard, Woodend Avenue	1327	1455	1802
<b>3</b>	<b>Garston</b> Banks Road	1335	1503	1810
<b>4</b>	<b>Liverpool South Parkway</b> ⇌	1338	1506	1813
<b>5</b>	Brodie Avenue, Booker Avenue	1344	1512	1819
<b>6</b>	<b>Penny Lane</b>	1350	1518	1825
<b>7</b>	<b>Smithdown Minor Injuries Unit</b> Smithdown Road	1355	1523	1830
<b>8</b>	<b>Liverpool Women's Hospital</b> Grove Street <b>H</b>	1359	1527	1834
<b>9</b>	<b>Royal Liverpool Hospital</b> <b>H</b>	1408	1536	1843

## Sundays and bank holidays

M M M

<b>1</b>	<b>Speke</b> Eastern Avenue	1320	1440	1745
<b>2</b>	Speke Boulevard, Woodend Avenue	1327	1447	1752
<b>3</b>	<b>Garston</b> Banks Road	1335	1455	1800
<b>4</b>	<b>Liverpool South Parkway</b> ⇌	1338	1458	1803
<b>5</b>	Brodie Avenue, Booker Avenue	1344	1504	1809
<b>6</b>	<b>Penny Lane</b>	1350	1510	1818
<b>7</b>	<b>Smithdown Minor Injuries Unit</b> Smithdown Road	1353	1513	1821
<b>8</b>	<b>Liverpool Women's Hospital</b> Grove Street <b>H</b>	1356	1516	1824
<b>8</b>	<b>Royal Liverpool Hospital</b> <b>H</b>	1403	1523	1831

### Codes used on this page:

M - Merseytravel Bus Service operated by Eazibus

201

# Royal Liverpool Hospital - Speke

Merseytravel  
bus service

## Mondays to Saturdays

Ⓜ   Ⓜ   Ⓜ

<b>9</b>	<b>Royal Liverpool Hospital</b>	<b>H</b>	1536	1706	1945
<b>8</b>	<b>Liverpool Women's Hospital</b> Grove Street	<b>H</b>	1545	1715	1952
<b>7</b>	<b>Smithdown Minor Injuries Unit</b> Smithdown Road		1549	1719	1955
<b>6</b>	<b>Penny Lane</b>		1554	1724	1958
<b>5</b>	Brodie Avenue, Booker Avenue		1600	1730	2004
<b>4</b>	<b>Liverpool South Parkway</b>	⇌	1606	1736	2010
<b>3</b>	<b>Garston</b> Banks Road		1609	1739	2013
<b>2</b>	Speke Boulevard, Woodend Avenue		1617	1747	2021
<b>1</b>	<b>Speke</b> Eastern Avenue		1624	1754	2028

## Sundays and bank holidays

Ⓜ   Ⓜ   Ⓜ

<b>9</b>	<b>Royal Liverpool Hospital</b>	<b>H</b>	1530	1645	1945
<b>8</b>	<b>Liverpool Women's Hospital</b> Grove Street	<b>H</b>	1537	1652	1952
<b>7</b>	<b>Smithdown Minor Injuries Unit</b> Smithdown Road		1540	1655	1955
<b>6</b>	<b>Penny Lane</b>		1543	1658	1958
<b>5</b>	Brodie Avenue, Booker Avenue		1549	1706	2004
<b>4</b>	<b>Liverpool South Parkway</b>	⇌	1555	1712	2010
<b>3</b>	<b>Garston</b> Banks Road		1558	1715	2013
<b>2</b>	Speke Boulevard, Woodend Avenue		1606	1723	2021
<b>1</b>	<b>Speke</b> Eastern Avenue		1613	1730	2028

### Codes used on this page:

Ⓜ - Merseytravel Bus Service operated by Eazibus

**801****Springwood Cemetery -  
Royal Liverpool Hospital****Merseytravel  
bus service****Sundays and bank holidays**

M M

<b>10</b>	<b>Springwood Cemetery</b> Springwood Avenue	1445	1605
<b>11</b>	<b>Garston</b> Speke Road	1450	1610
<b>12</b>	<b>Aigburth Vale</b> Aigburth Road	1459	1619
<b>6</b>	<b>Penny Lane</b>	1506	1626
<b>7</b>	<b>Smithdown Minor Injuries Unit</b> Smithdown Road	1509	1629
<b>8</b>	<b>Liverpool Women's Hospital</b> Grove Street <b>H</b>	1512	1632
<b>9</b>	<b>Royal Liverpool Hospital</b> <b>H</b>	1519	1639

**801****Royal Liverpool Hospital -  
Springwood Cemetery****Merseytravel  
bus service****Sundays and bank holidays**

M M

<b>9</b>	<b>Royal Liverpool Hospital</b> <b>H</b>	1405	1525
<b>8</b>	<b>Liverpool Women's Hospital</b> Grove Street <b>H</b>	1412	1532
<b>7</b>	<b>Smithdown Minor Injuries Unit</b>	1415	1535
<b>6</b>	<b>Penny Lane</b>	1418	1538
<b>12</b>	<b>Aigburth Vale</b> Aigburth Road	1425	1545
<b>11</b>	<b>Garston</b> Speke Road	1434	1554
<b>4</b>	<b>Liverpool South Parkway</b> ⇌	1437	1557
<b>10</b>	<b>Springwood Cemetery</b> Springwood Avenue	1441	1601

**Mondays to Saturdays - No service 801****Codes used on this page:**

M - Merseytravel Bus Service operated by Halton Transport