



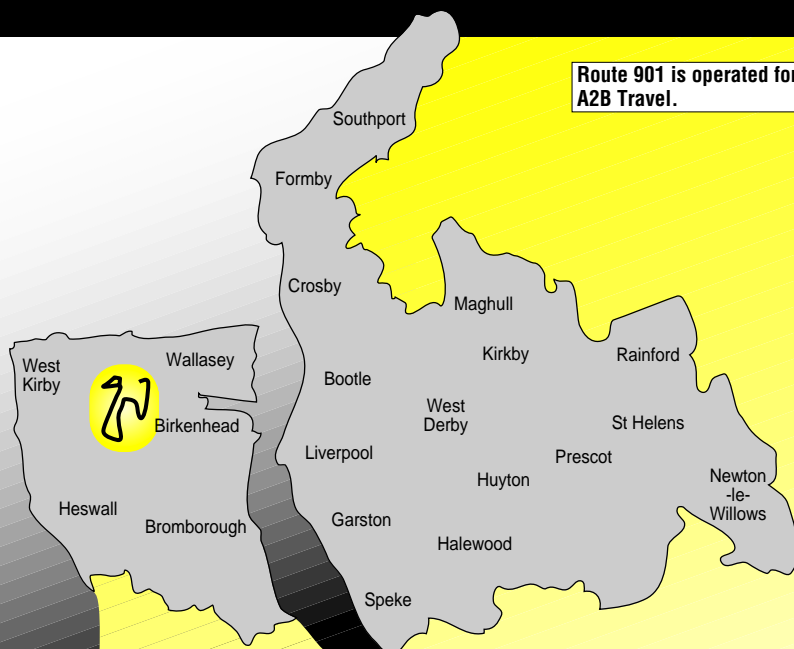
Merseytravel

# Bus times

# 901

## Leasowe station - Moreton (Curlew Way)

Route 901 is operated for Merseytravel by A2B Travel.



MT SFT 09/07 W

### Changes from 14 October 2007

Service is now operated for Merseytravel by A2B Travel.  
(Route and times are unchanged.)

Travel Information



traveline  
public transport info

0871 200 22 33

Calls costs 10p per minute from land lines, mobiles may vary

OPEN 0800 TILL 2000 7 DAYS A WEEK

[www.merseytravel.gov.uk](http://www.merseytravel.gov.uk)



**No Smoking**  
on all buses  
in Merseyside



## Welcome to your new bus timetable

We (Merseytravel) have produced this new bus timetable as your bus service has recently changed. We **do not** run bus services - they are run by private bus companies. However, we pay towards essential bus services which the bus companies do not run. In timetables, these services are called **Merseytravel Bus Services** and are shown by the symbol



## How to use this timetable

The timetable is split into routes and days of the week (see **1** below). Please make sure you are looking at the timetable for the right direction you want to travel in. The travel direction is shown across the top of the page.

On the left side of the page there is a list of the main bus stops for the service (see **2** below).

To the left of these stops is a list of numbered boxes (see **3** below) which will help you find the bus stop on the route map (the map is shown on a separate page within the booklet). There is also a description in writing of the route the bus takes.

The time the bus leaves each stop is shown in a column running down the right-hand side of the page (see **4** below). Each column of times is a separate bus journey. Read the column from top to bottom.

First, look for the bus stop nearest where you want to get the bus from. Then, look at the times shown on the same line to find the time nearest when you want to get the bus. Read down the list of times until you get to the time opposite a place near to where you want to get off the bus. The time is your arrival time.

We can't show times for every bus stop, or the timetable would be too big to print in a booklet. Please remember to look for any codes at the top of the page or alongside each column which may change your journey (see **5** below). You can find an explanation of these codes in the 'Codes' box at the bottom of the timetable.

You can find all the bus-stop codes we use in this booklet at the bottom of this page.

In some timetable booklets, we show some of the bus stops in italics (see **6** below). This means we have given a rough time for that stop because the bus company has not given us an exact time.

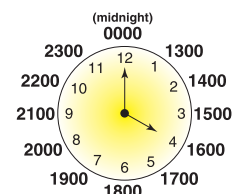
Here is an example of a timetable.

<b>1</b> Mondays to Fridays			<b>5</b>
<b>1</b> Liscard Wallasey Road <b>2</b>	0751	<b>4</b>	0801
<b>2</b> Church Road, Brighton Street	0757		0807
<b>3</b> Poulton Road, Wheatland Lane	0800		0810
<b>4</b> <i>Poulton Road, Gorsey Lane</i> <b>6</b>	0804		0814
<b>5</b> Weatherhead School	0807		0817



## The 24-hour clock

In this timetable booklet, we show bus times in the 24-hour clock. For example, 9.42am is shown as '0942' and 3.28pm is shown as '1528'. This clock shows how afternoon and evening times appear in the 24-hour clock.



## Codes used in this timetable



Shopping



Nearby Merseyrail station



## Customer service and lost property

---

If you have any comments or suggestions about Merseytravel bus services or have left something in a bus station we run, please contact us at:

**Merseytravel**  
24 Hatton Garden, Liverpool L3 2AN

**Phone: 0151 227 5181**



## Public holidays

---

Bus services may change during public holidays. Please check with **Traveline** on **0871 200 22 33** for details of the bus services running on these days.



## Where to get more information and help

---

### Travel centres

We have seven travel centres throughout Merseyside. You can visit one to get information about all public transport services. To find out opening times, phone us on **0151 330 1066** or log on to **www.merseytravel.gov.uk**



### Free weekly newspapers

Every week, you can find a 'Merseytravel news update' advert in your local free newspaper. This tells you about any changes to your bus services.



### Teletext on itv1

If your television has Teletext, you can find a simple version of the 'Merseytravel news update' for the week to come on page 164 of Teletext on itv1.



### Our website

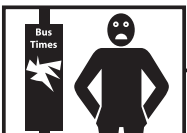
Our website ([www.merseytravel.gov.uk](http://www.merseytravel.gov.uk)) contains lots of information about public transport in Merseyside. You can visit our website at **www.merseytravel.gov.uk**



## Smoking on buses

---

Help us and the bus companies of Merseyside make travelling on public transport an enjoyable experience for all customers. Please do not smoke on any buses.

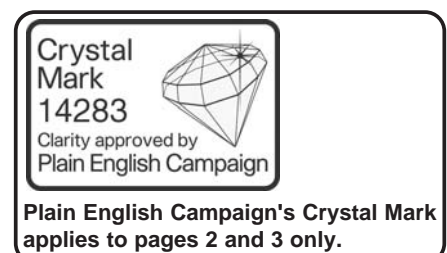


## Damage to bus stops and shelters

---

If you see any damage to our bus stops and shelters in Merseyside (for example, broken glass or vandalised timetable information displays), please help us to fix them quickly by phoning us on **0800 917 9997**. This call is free and the lines are open 24 hours a day.

We have done our best to make sure that all the information in this booklet is correct, but we and the bus companies whose services we show in this booklet, are not liable for any mistakes.



# Route 901: Leasowe Merseyrail station - Moreton (Curlew Way)



**KEY**

- 1** Timetable Reference Point
- † Church
- 📖 Library
- 🚉 Merseyrail Station
- 🚏 Hail and Ride section of route



Along Danger Lane, Pasture Avenue, Edge Hill Road, Lingham Lane, Glasier Road, Curlew Way, Tern Way and Wastdale Drive this service offers the 'Hail and Ride' facility. This means you can get on and off the bus where you wish along these roads, BUT ONLY IF THE BUS DRIVER THINKS IT IS SAFE TO DO SO.

If you want to get on the bus, please give the bus driver a clear hand signal in good time. Please avoid main road junctions, crossings and bends in the road.

If you want to get off the bus, please tell the driver in advance.

901

# Leasowe station - Curlew Way

Merseytravel  
bus service

**Mondays to Saturdays**

		M	M	M	M		M	M		M	M	M	M	M
<b>1</b>	<b>Leasowe Merseyrail station</b> ⇌			1018	1048		<b>18</b>	<b>48</b>		1548	1618	1648	1748	1855
<b>2</b>	<b>Moreton Cross</b> 🗑️			1026	1056		<b>26</b>	<b>56</b>		1556	1626	1656	1756	1901
<b>3</b>	<b>Saughall Massie</b> Overchurch Road		1001	1031	1101	then at these minutes past each hour	<b>31</b>	<b>01</b>		1601	1631	1701	1801	1906
<b>4</b>	Bermuda Road	0934	1004	1034	1104		<b>34</b>	<b>04</b>		1604	1634	1704	1804	1909
<b>5</b>	<b>Moreton</b> Curlew Way	0942	1012	1042	1112		<b>42</b>	<b>12</b>	until	1612	1642	1712	1812	1916
<b>4</b>	Bermuda Road	0950	1020	1050	1120		<b>50</b>	<b>20</b>		1620		1720	1820	1923
<b>3</b>	<b>Saughall Massie</b> Overchurch Road	0953	1023	1053	1123		<b>53</b>	<b>23</b>		1623		1723	1823	1926
<b>2</b>	<b>Moreton Cross</b> 🗑️	0958	1028	1058	1128	<b>58</b>	<b>28</b>		1628		1728	1828	1931	
<b>1</b>	<b>Leasowe Merseyrail station</b> ⇌	1006	1036	1106	1136	<b>06</b>	<b>36</b>		1636		1736	1836	1937	

			M	M
<b>1</b>	<b>Leasowe Merseyrail station</b> ⇌		<b>55</b>	2255
<b>2</b>	<b>Moreton Cross</b> 🗑️		<b>01</b>	2301
<b>3</b>	<b>Saughall Massie</b> Overchurch Road	then at these minutes past each hour	<b>06</b>	2306
<b>4</b>	Bermuda Road		<b>09</b>	2309
<b>5</b>	<b>Moreton</b> Curlew Way		<b>16</b>	2316
<b>4</b>	Bermuda Road		<b>23</b>	2323
<b>3</b>	<b>Saughall Massie</b> Overchurch Road		<b>26</b>	2326
<b>2</b>	<b>Moreton Cross</b> 🗑️	<b>31</b>	2331	
<b>1</b>	<b>Leasowe Merseyrail station</b> ⇌	<b>37</b>	2337	

**Codes used on this page:**

M - Merseytravel Bus Service operated by A2B Travel

**901****Leasowe station - Moreton (Curlew Way)****Merseytravel  
bus service****Sundays**

		Ⓜ		Ⓜ		Ⓜ
<b>1</b>	<b>Leasowe Merseyrail station</b> ⇌	0955		<b>55</b>		2255
<b>2</b>	<b>Moreton Cross</b> 🗑️	1001		<b>01</b>		2301
<b>3</b>	<b>Saughall Massie</b> Overchurch Road	1006	then at these minutes past each hour	<b>06</b>		2306
<b>4</b>	Bermuda Road	1009		<b>09</b>		2309
<b>5</b>	<b>Moreton</b> Curlew Way	1016		<b>16</b>	until	2316
<b>4</b>	Bermuda Road	1023		<b>23</b>		2323
<b>3</b>	<b>Saughall Massie</b> Overchurch Road	1026		<b>26</b>		2326
<b>2</b>	<b>Moreton Cross</b> 🗑️	1031		<b>31</b>		2331
<b>1</b>	<b>Leasowe Merseyrail station</b> ⇌	1037		<b>37</b>		2337

**Codes used on this page:**

Ⓜ - Merseytravel Bus Service operated by A2B Travel

**Route Description**

**Route: from** LEASOWE MERSEYRAIL STATION TURNING CIRCLE via Reeds Lane, Hoylake Road, Danger Lane, Pasture Avenue, Pasture Road, Hoylake Road, Borrowdale Road, Overchurch Road, Saughall Massie Road, Saughall Road, Hoylake Road, Bermuda Road, Edge Hill Road, Digg Lane, Town Meadow Lane, Wastdale Drive, Curlew Way, Tern Way, Wastdale Drive, Glasier Road, Lingham Lane, Town Meadow Lane, Digg Lane, Edge Hill Road, Bermuda Road, Hoylake Road, Saughall Road, Saughall Massie Road, Overchurch Road, Borrowdale Road, Hoylake Road, Pasture Road, Pasture Avenue, Danger Lane, Hoylake Road, Reeds Lane to LEASOWE MERSEYRAIL STATION TURNING CIRCLE.